



### Elektra

Sample ID: G0K0363-04

Matrix: Industrial Hemp

Test ID: 5012596

Source ID:

Date Sampled: 11/17/20

Date Accepted: 11/17/20

Tree Fort Farms

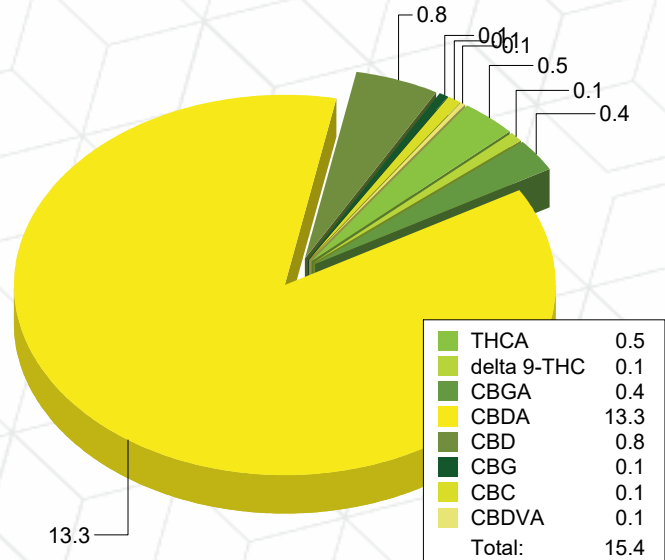
### Potency Analysis

Date/Time Extracted: 11/19/20 11:36

Analysis Method/SOP: 215

Batch Identification: 2047045

	LOQ (%)	% by Wt.	mg/g	Cannabinoids Profile	
Total THC	0.002	0.57	5.7		
Total CBD	0.002	12	120		
Total CBG	0.0002	0.45	4.5		
THCA	0.0008	0.52	5.2		
delta 9-THC	0.002	0.12	1.2		
THCV	0.001	< LOQ	< LOQ		
THCVA	0.0005	< LOQ	< LOQ		
CBD	0.002	0.78	7.8		
CBDA	0.002	13	130		
CBDV	0.001	< LOQ	< LOQ		
CBDVA	0.0004	0.055	0.55		
CBN	0.0008	< LOQ	< LOQ		
CBG	0.0002	0.081	0.81		
CBGA	0.0002	0.42	4.2		
CBC	0.002	0.11	1.1		



### Water Activity

Date/Time Extracted: 11/19/20 14:24

Analysis Method/SOP: 102

Water Activity: 0.56 at 24°C

Action Level: 0.65

### Moisture

Date/Time Extracted: 11/19/20 14:29

Analysis Method/SOP: 103

Moisture: 8.08 %

Action Level: 15%

Potency results are reported on a dry weight basis.

Total THC = delta 9-THC + (THCA \* 0.877)

Total CBD = CBD + (CBDA \* 0.877)

Total CBG = CBG + (CBGA \* 0.878)

LOQ=Limit of Quantification, the lowest measurable concentration of an analyte.



*Russell Kuhfeld*

Russell Kuhfeld  
Quality Officer - 11/20/2020

All QC samples met acceptance criteria of the method; data available upon request. These results relate only to the sample included on this report. The report may not be reproduced except in full, without the written permission of Green Leaf Lab.

This is for informational testing and is not compliance testing. Lab results apply to the sample as received.